



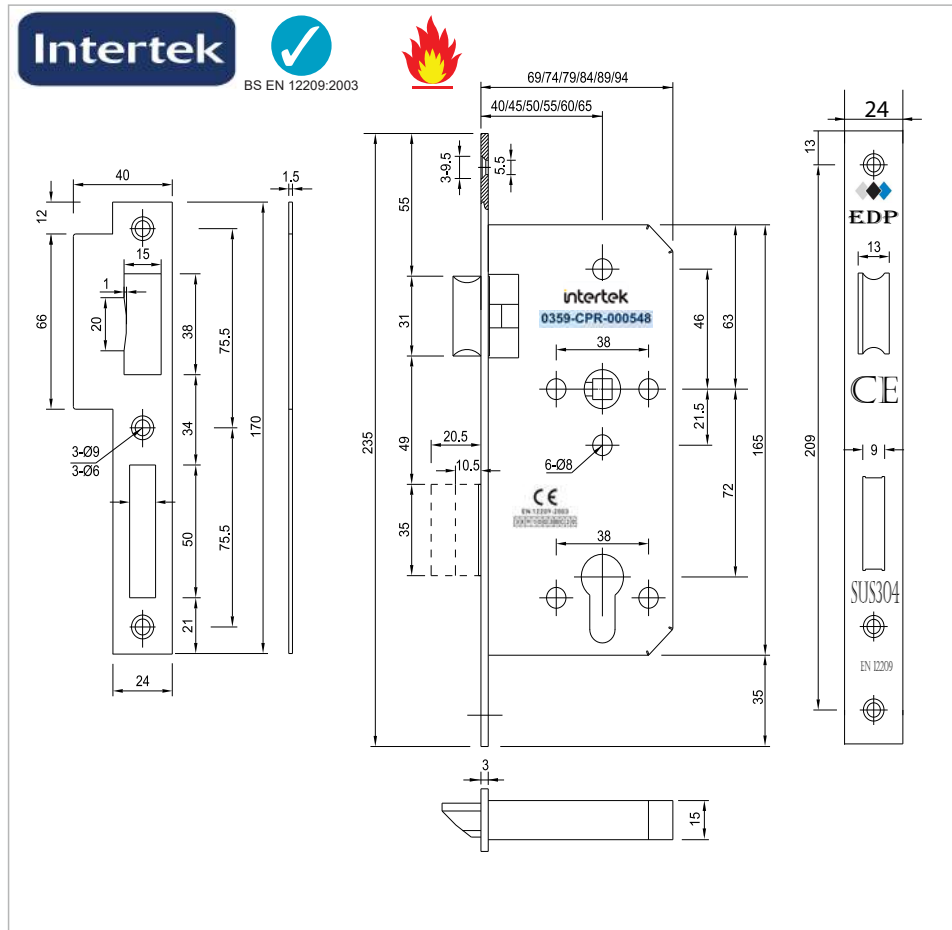
Standard lock Mortise lock reversible

F



O Type

- | | |
|-----------------------------------|----------------------------------------------|
| EL 4585Z <input type="checkbox"/> | EL 5572Z <input checked="" type="checkbox"/> |
| EL 5085Z <input type="checkbox"/> | EL 6072Z <input type="checkbox"/> |
| EL 4585Z <input type="checkbox"/> | EL 6572Z <input type="checkbox"/> |
| | EL 7072Z <input type="checkbox"/> |
| | EL 8072Z <input type="checkbox"/> |



Material grade : 304 Grade Standard
316 Grade Up on Request

Features

- ① According to DIN 18.250 class 3
- ① For wooden or steel doors
- ① Optional for non-rebated doors
- ① Suitable for external fire and smoke protection doors
- ① Prepared for profile cylinders
- ① With key action
- ① Deadbolt 2-turns
- ① Fire Rating: 240mnt (4 Hour)

Technical data

Follower	8×8mm
Distance	72mm
Backset	40mm 45mm 50mm 55mm
	60mm 65mm

Forend

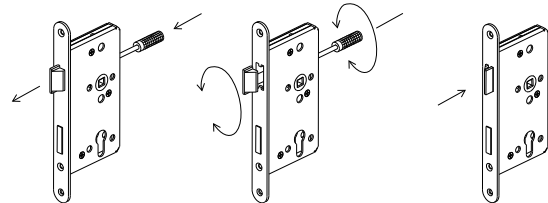
Type	square head
Thickness	3mm
Width	24mm

Forend finish

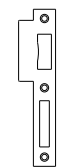
Stainless steel	SSS PSS PVD
-----------------	-------------

Accessories

Strike plate
Pocket
Lock and strike plate fixing screws

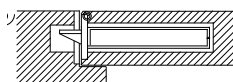


Strike plate type



72Z-01S

O Door type



Profile of a non rebated door with mortise lock
(forend protruding on one side)



SSS



PSS



PVD

