



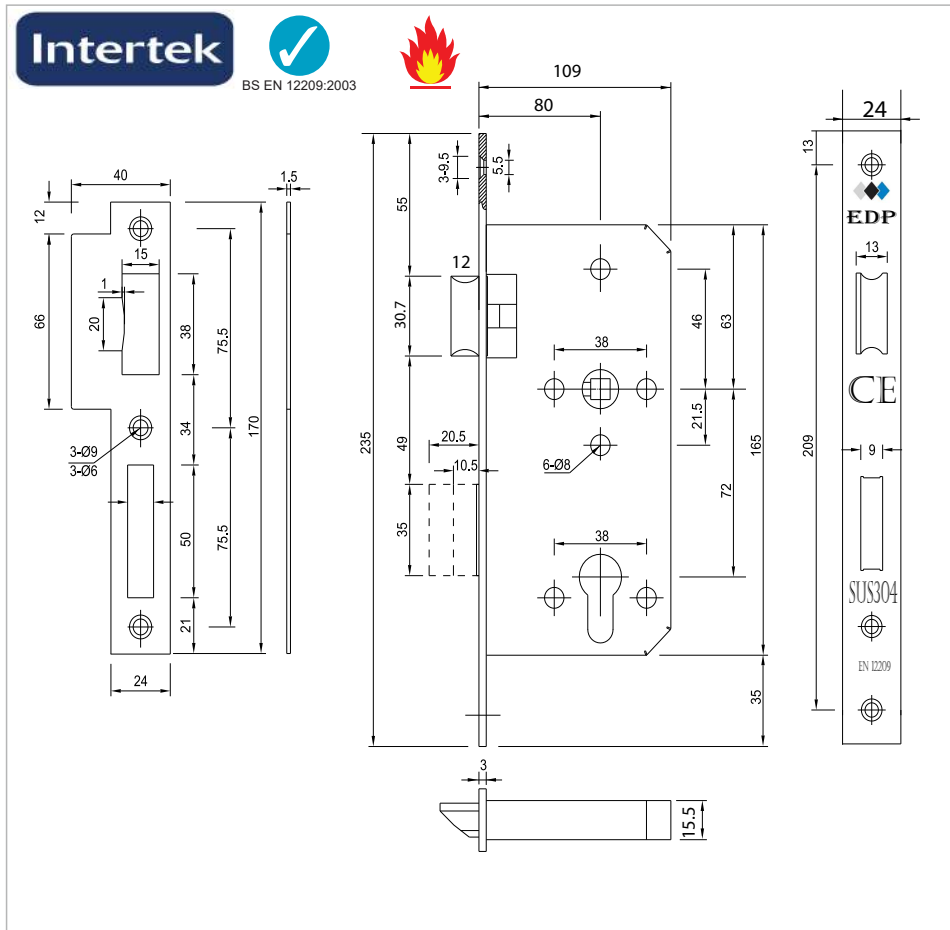
## Standard lock Mortise lock reversible

**F**



**O Type**

**EL 8072Z**  



Material grade : 304 Grade Standard  
316 Grade Up on Request

### Features

- ① According to DIN 18.250 class 3
- ① For wooden or steel doors
- ① Optional for non-rebated doors
- ① Suitable for external fire and smoke protection doors
- ① Prepared for profile cylinders
- ① With key action
- ① Deadbolt 2-turns

### Technical data

Follower	8×8mm
Distance	72mm
Backset	80mm

### Forend

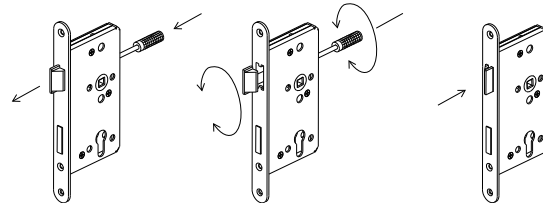
Type	round head, square head
Thickness	3mm
Width	24mm

### Forend finish

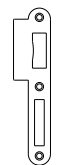
Stainless steel	SSS PSS PVD
-----------------	-------------

### Accessories

Strike plate	
Pocket	
Lock and strike plate fixing screws	

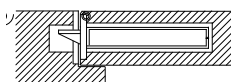


### Strike plate type



72Z-01R

### O Door type



Profile of a non rebated door with mortise lock  
(forend protruding on one side)



SSS



PSS



PVD

