



Intertek



BS EN 12209:2003



EL-HK01



Features

- 1 According to EN 12209
- 1 For wooden or sliding doors
- 1 Prepared for profile cylinders
- 1 With key action
- 1 Hook1-turn

Technical data

Backset	50mm
---------	------

Forend finish

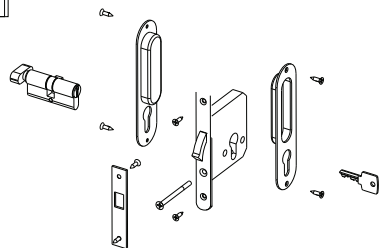
Stainless steel	SSS PSS PVD
-----------------	-------------

Forend

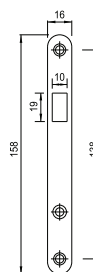
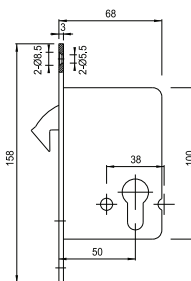
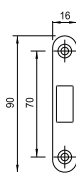
Type	round head
Thickness	3 mm
Width	16 mm

Accessories

Strike plate	
Pocket	
Lock and strike plate fixing screws	



OType



SSS



PSS



PVD

EL-HK02



Features

- 1 According to EN 12209
- 1 For wooden or sliding doors
- 1 Prepared for profile cylinders
- 1 With key action
- 1 Hook1-turn

Technical data

Backset	40mm 50mm
---------	-----------

Forend

Type	square head
------	-------------

Thickness	3 mm
-----------	------

Width	22 mm
-------	-------

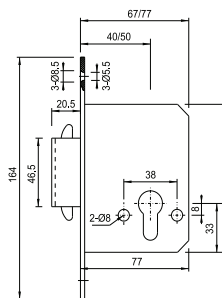
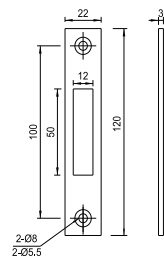
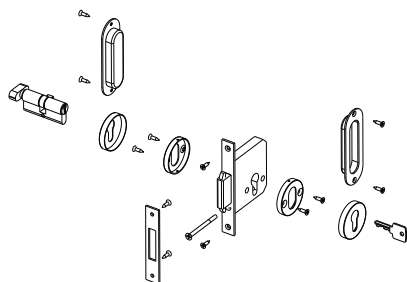
Forend finish

Stainless steel	SSS PSS PVD
-----------------	-------------

Accessories

Strike plate	
Pocket	
Lock and strike plate fixing screws	

OType



SSS



PSS



PVD

