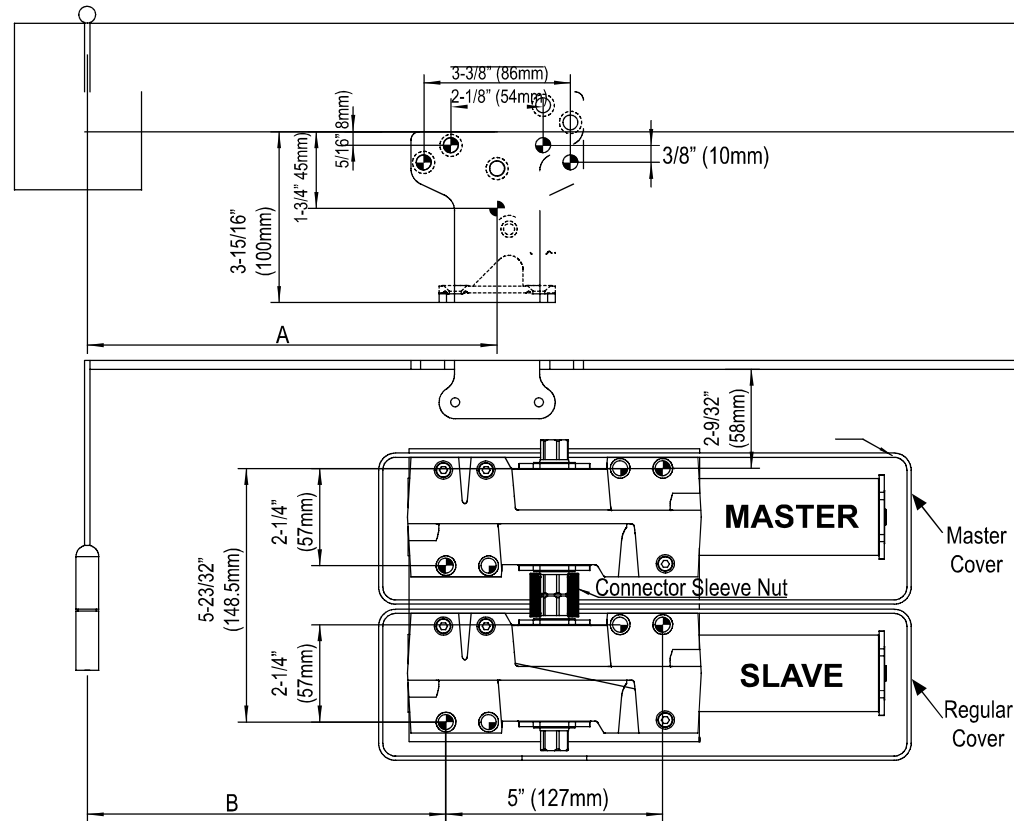


PARALLEL ARM (PUSH SIDE) MOUNTING

Symmetrical for Left Hand and Right Hand



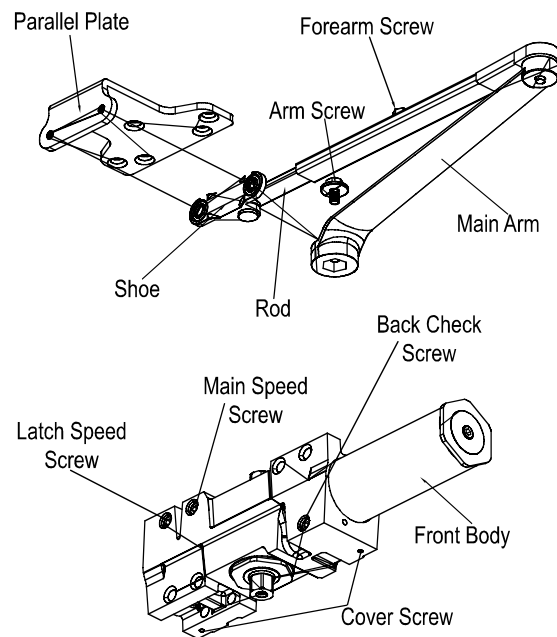
Opening	DIM		Holes	03.2	05.2
	A	B			
100°	9-7/16" (240mm)	8-1/4" (210mm)	Screw		
130°	8-11/16" (220mm)	7-1/4" (185mm)			
140°	7-7/8" (200mm)	6-1/2" (165mm)			

Installation Instructions:

1. Drill 9 holes according to the drawing.
2. Turn all the valves to maximum speed for both MASTER and SLAVE door closers. The MASTER door closer is the one where the arm will be connected.
3. Install the SLAVE door closer ONLY on the mount using 2 screws. Use 2 screws to install the mounting plate on the door.
4. Install regular cover of the SLAVE door closer and secure with screws.
5. Connect the two door closers using the Connector Sleeve Nut. Use 2 screws to fix the MASTER door closer onto the mounting plate. Use the 2 screws to fix the mounting plate to the door.
6. Fix the parallel plate to the frame using the screws provided. And fix the shoe to the parallel plate using the screws provided.
7. Open the door, connect the rod and Forearm tube. Close the door and adjust the length of the forearm. Place the Forearm parallel to the frame. Fix the forearm with screws.
8. Install the cover and fix with screws provided.

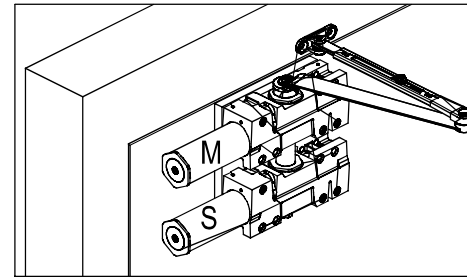
Function:

1. Before adjusting the door closers, turn all the valves to maximum speed.
2. Normal closing time is 4-6 seconds from the 90° to the 0°. To decrease the main speed of door, turn the regulating valve near the shaft, clockwise. To decrease latch speed, turn regulating valve near the hinge, clockwise.
3. Turn the Back Check Valve clockwise. Back Check function is available at 70° - 110°.
4. Increase or decrease the closing force by adjusting the power valve. See page 1 (Power adjustment and door width) for reference.

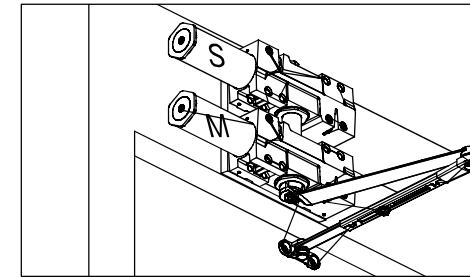


Installation Instructions For Double F8400 DOOR CLOSER Using CONF8400 CONNECTOR PLATE

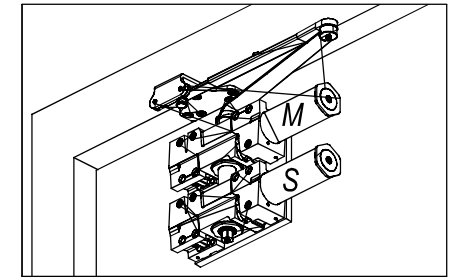
Regular Arm
(Pull Side) Mounting



Top Jamb
(Push Side) Mounting



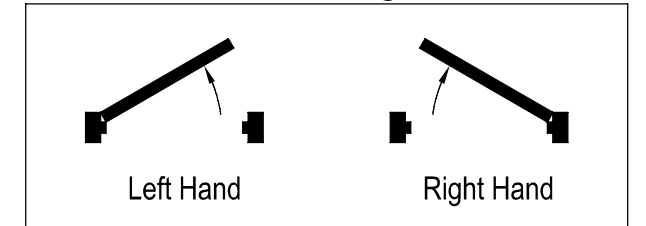
Parallel Arm
(Push Side) Mounting



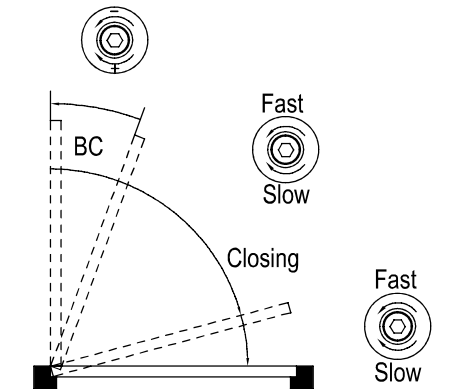
Power Adjustment and Door Width

Door Max Width		Adjusting Nut and Turns
Exterior	Interior	
-----	5 lb-f	-5 (counter-clockwise)
8.5 lb-f	34" (864mm)	-2 (counter-clockwise)
30" (762mm)	38" (962mm)	0
36" (914mm)	48" (1219mm)	+5 (clockwise)
42" (1067mm)	54" (1372mm)	+10 (clockwise)
48" (1219)	60" (1524mm)	+15 (clockwise)

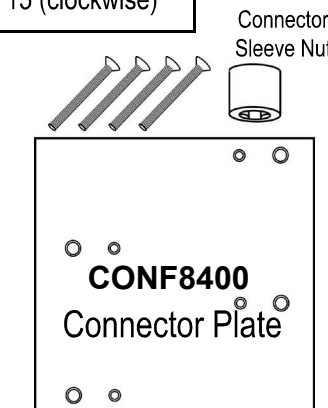
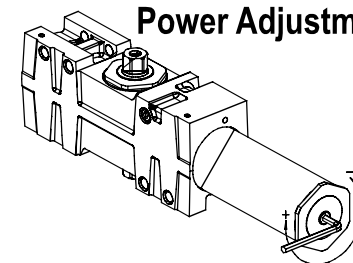
Left Hand Door and Right Hand Door



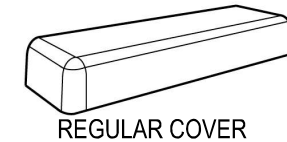
Latching and BC adjustment



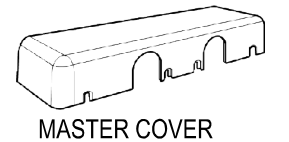
Power Adjustment



Connector
Sleeve Nut



REGULAR COVER



MASTER COVER