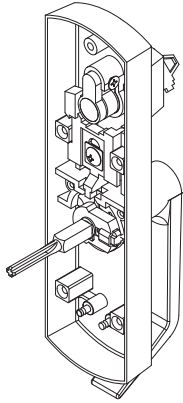


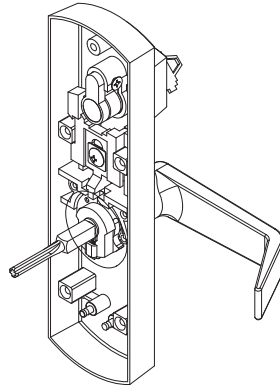
ESCUTCHEON Lever Trim

Instructions for changing hand of lever LHR

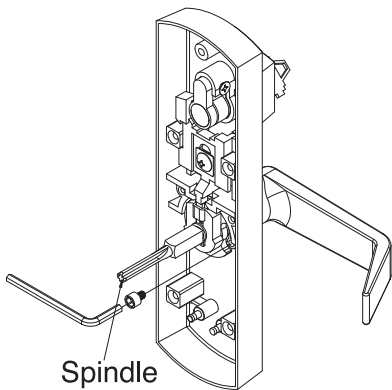
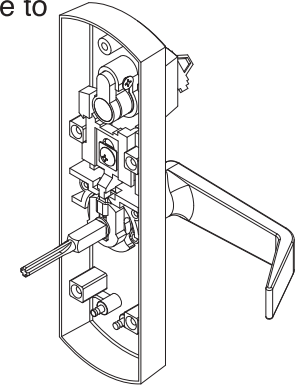
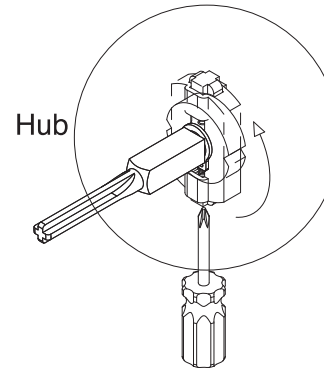
1. Lever Trim shipped and supplied with lever positioned neutral, Non Handed



2. Rotate lever handle to desired hand

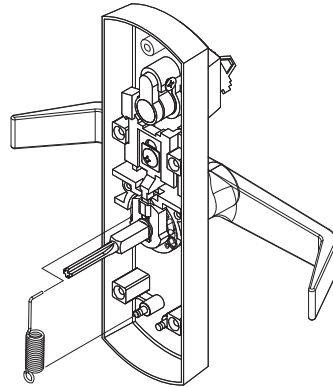


3. Depress & push in the spring loaded locking pin in the "up" position to rotate hub. Make sure spring loaded locking pin click in place & is in line with locking plate tongue to operate

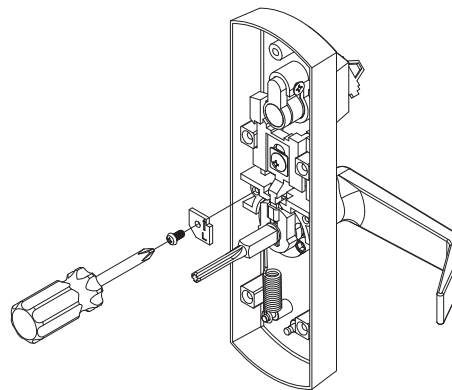


Spindle

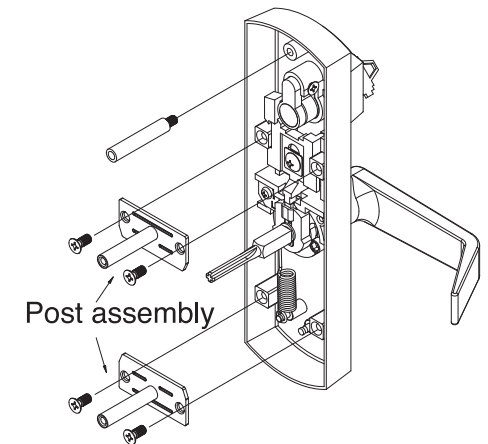
4. Fasten stop screw on the left side of spindle, using hex wrench.



5. Mount the hub spring on opposite side of stop screw.



6. Fasten guide stop plate to case at the same side of return spring.



7. Install top and bottom "post assembly plate"

Instructions for replacing cylinder

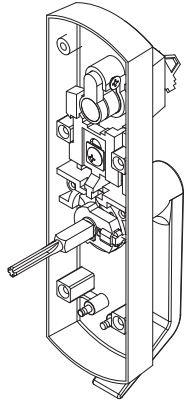
1. With locking plate in down position, unscrew cyl nut and remove the cyl and ring

2. Replace cyl by reversing above procedure. Make sure that cyl cam points up and correct length of ring is used

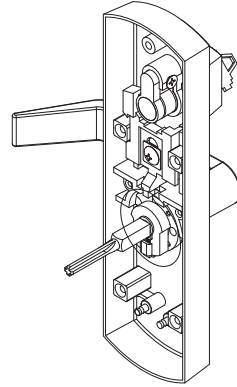
ESCUTCHEON Lever Trim

Instructions for changing hand of lever RHR

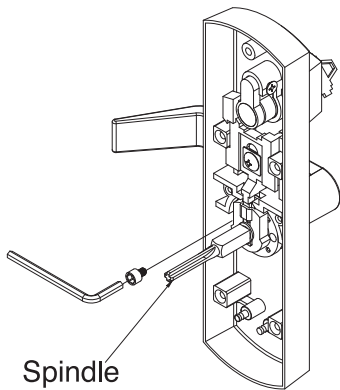
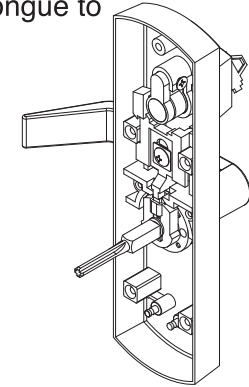
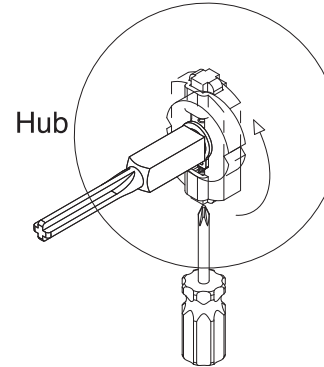
1. Lever Trim shipped and supplied with lever positioned neutral, Non Handed



2. Rotate lever handle to desired hand

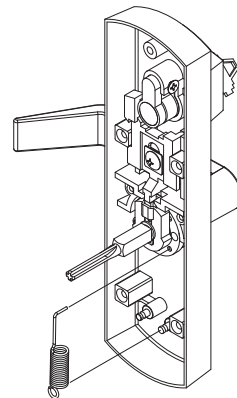


3. Depress & push in the spring loaded locking pin in the "up" position to rotate hub. Make sure spring loaded locking pin click in place & is in line with locking plate tongue to operate

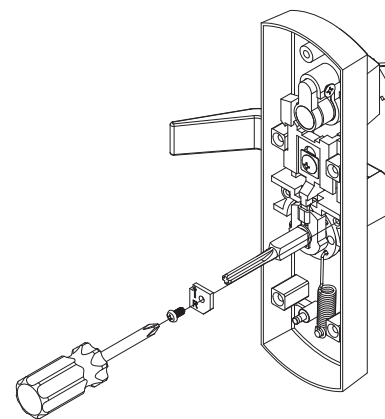


Spindle

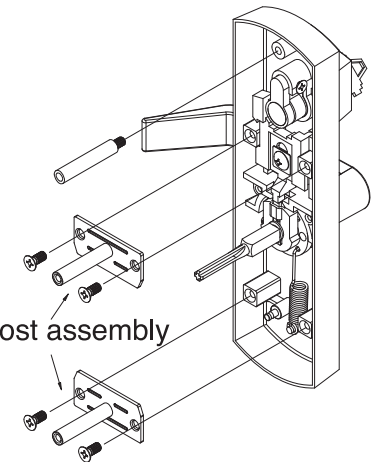
4. Fasten stop screw on the right side of spindle, using hex wrench.



5. Mount the hub spring on opposite side of stop screw.



6. Fasten guide stop plate to case at the same side of return spring.



7. Install top and bottom "post assembly plate"

Instructions for replacing cylinder

1. With locking plate in down position, unscrew cyl nut and remove the cyl and ring

2. Replace cyl by reversing above procedure. Make sure that cyl cam points up and correct length of ring is used